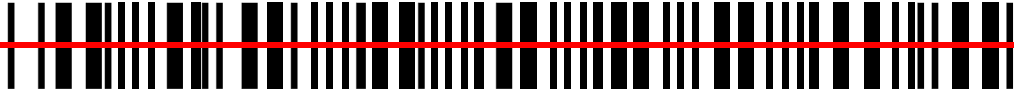


DeltaOne Software, Inc.

Barcoding Systems from Concept to Completion



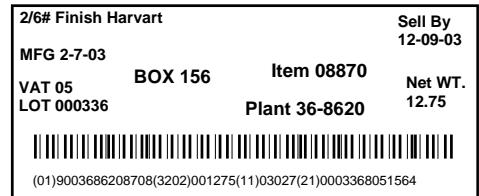
QuikWgt Software

Add Up Your Variable Weight Containers
Add Up Your Savings

Designed specifically for the meat industry and refrigerated warehousing applications



QuikWgt



Add up your Savings

Adding up hand written weights is slow, time consuming, inaccurate, and expensive. Why have skilled clerks waste hours of time trying to read and calculate weights, when the information is already barcoded on the carton? Most meat, seafood, and dairy products have the product id, net weight, date (production, sell by, etc.), and serial number already encoded in a single barcoded label on the shipping carton. By scanning this barcode, you can have a professional looking, highly accurate report, in less time than it would take a clerk to write down the weights.

QuikWgt:

- **Replaces the time consuming hand counting and rechecking process by scanning the barcoded labels that already exist on your containers. Each box is scanned when the order is picked by your warehouse personnel.**
- Eliminates time spent rechecking box count and weight; tallying net weight is now profitable.
- Saves you time and money. Rapid Return On Investment typically under 6 months.
- Provides subtotal by: lot #, product, date, and FDA establishment number.
- **Generates reports** directly to your printer. Reports can be made into PDF (Adobe Acrobat) documents for e-mailing. Choose from:

Standard QuikWgt Report:

- Item Shipped
- Total Number of Cases Shipped
- Cartons Sorted by FDA Establishment
- Individual Carton Weights
- Cartons Sorted by Lot Number

Standard QuikWgt With Date Code Report:

Same as the Catch Weight Report plus subtotals by date code
Date code is required for most international shipments

- **Allows for customized reports.** Available at additional cost
- **Locates shipment of outdated or recalled product.**
- **Searches shipment history by:**
 - Date Range
 - Serial Number
 - Customer
 - Product/Item
 - Order #
 - User ID
 - FDA Establishment Number
 - Manufacturer Date
- Recognizes industry standard barcodes as well as custom formats.
- Generates compliance documents for export and special shipments.
- Recognizes weights in pounds or kilograms.
- Requires no special computer skills to run the program. Simple and easy to use.

QuikWgt can be run as a stand alone program, or it can be integrated into your existing warehouse management or order entry system.

Example of Cost Basis Scenario:

Scanning your cartons is faster than using the traditional handwritten "tally or catch weight" sheets. Your savings will be seen in the time your employees spend adding and verifying the totals. Our testing shows that it takes a skilled office staff worker who adds-up weights as a regular part of their job, about an hour to add-up 1,000 cartons. The weights of the 1,000 cartons are hand-written on a "tally/catch weight" sheet, the weights are then added on a calculator. The totals are then verified by a second calculator run of the numbers, the counts are reconciled and the shipping documents are prepared. When taxes, insurance, vacation, supervision, office space, equipment costs, and other expenses are factored in, your skilled office worker probably costs you twice their hourly pay. Lets assume, \$35/hr (\$17.50/hr x 2). If you tally just 25,000 weights per month, the QuikWgt system will pay for itself in an average of six months.

The example below does not take into account your company's greatly improved accuracy in mis-shipment prevention and the rapid tracking of recalled products. Your customers will appreciate the detailed and easily readable reports, and they will highly value your ability to trace the product that was shipped.

Do the Math:

Total boxes counted per month (A) _____
Estimated hrs spent counting boxes (B) _____
1 hr = 1,000 boxes
Labor rate (with overhead) (C) _____
(hourly rate x 2)
Employee cost per month (B x C) (D) _____

Example:

(A) Assume 25,000 boxes per month
(B) 25,000/1,000 = 25 hrs.
(C) Assume \$35.00/ hr
(D) 25 x \$35.00 = \$875.00

This is a good estimation of your employee cost per month calculating the weights manually

Cost of QuikWgt system \$4,995.00/\$875.00 * ROI can be realized in approximately 6 months

Rapid ROI

*QuikWgt Package Price: \$4,995.00

System Includes:

DeltaOne's QuikWgt Software

(1) 2410 Intermec Handheld Data Collection Terminal/Battery

(1) Intermec 2410 Docking Station, Cable, and Power Supply

Software runs on your Windows based PC

Customized packages are available

Installation, training, sales tax, and freight charges not included

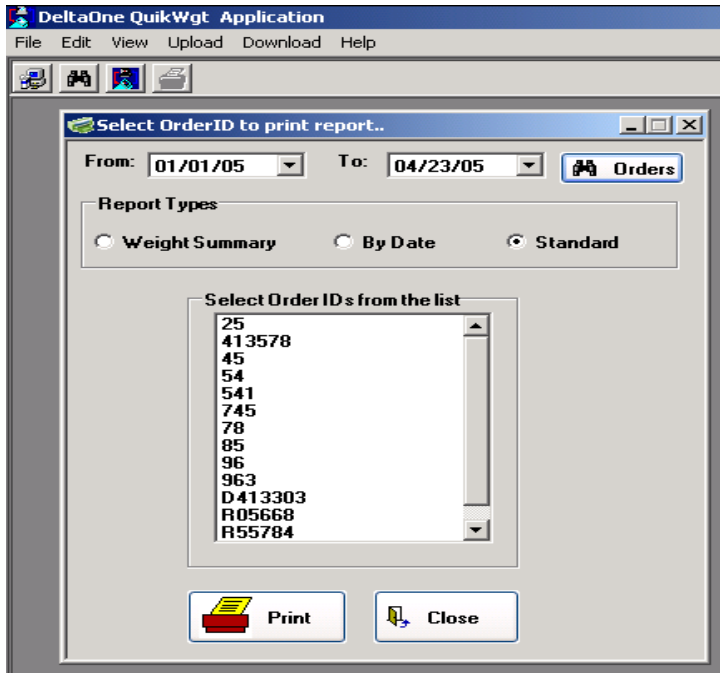


For an onsite demo or questions, contact us at:

DeltaOne Software 714-528-SCAN (7226) / 714-528-7236 (fax)



QuikWgt Reports



Standard Report:

Displays— Lot, Item, Est. Code, Cases, Weights, and Summary

Weight Summary:

Provides summary by— Lot, Cases, and weight (lbs or kilos)

By Date:

Same as Standard Report but also includes: date as per the barcoded information (production date, packaging date, sell by date, or expiration date)

With the QuikWgt Reports you can:

- Automatically print the most recently scanned orders
- Search based on date range
- Break down shipments by establishment codes and production dates
- Choose to print reports displaying individual weights or summary weights

Save a lot of paper!

Please see the enclosed reports for examples



The QuikWgt Search Screen Report

PC#	Lot#	Serial#	Weight	WT	EST	Customer#	Checked	Time Stamp
300349	A18507	0210124842	23.3	L	245J	4627	GAP	1/1/2000 11:15
300349	A18507	0210125577	24.2	L	245J	4627	GAP	1/1/2000 11:15
90027182300349	A18507	0210125568	24.4	L	245J	4627	GAP	1/1/2000 11:15
90027182300349	A18507	0210125564	25.8	L	245J	4627	GAP	1/1/2000 11:15
90027182300349	A18507	0210119217	29	L	245J	4627	GAP	1/1/2000 11:15
90027182300349	A18507	0210125614	25.9	L	245J	4627	GAP	1/1/2000 11:15
90027182300349	A18507	0210125581	24.8	L	245J	4627	GAP	1/1/2000 11:15
90027182300349	A18507	0210125632	24.4	L	245J	4627	GAP	1/1/2000 11:15
90061741187309	A19455	96726964	27.15	K	P93SEQ	4627	FV	1/1/2000 12:09
90061741187309	A19455	96725716	28.81	K	P93SEQ	4627	FV	1/1/2000 12:09
90061741187309	A19455	96726735	27.95	K	P93SEQ	4627	FV	1/1/2000 12:09
90061741187309	A19455	96726419	34.81	K	P93SEQ	4627	FV	1/1/2000 12:09
90061741187309	A19455	96736287	28.61	K	P93SEQ	4627	FV	1/1/2000 12:09
90061741187309	A19455	96736671	29.67	K	P93SEQ	4627	FV	1/1/2000 12:09
90061741187309	A19455	96736393	28.77	K	P93SEQ	4627	FV	1/1/2000 12:08
90061741187309	A19455	96727219	32.15	K	P93SEQ	4627	FV	1/1/2000 12:09
90061741187309	A19455	96723654	31.85	K	P93SEQ	4627	FV	1/1/2000 12:08
90061741187309	A19455	96726534	33.35	K	P93SEQ	4627	FV	1/1/2000 12:09

The search screen report is user defined and allows you to quickly answer questions like:

Have we shipped any pork ribs that were produced last month?

Which items did we ship from a specific USDA establishment code?

Who received product within a specific range of serial numbers?

What orders or lots were shipped within a specific date range?

At what time was the order scanned and how long did it take?

QuikWgt allows you to quickly find misplaced or recalled products and orders. If the carton has the information barcoded on it, you can quickly answer these and other questions in minutes. It would take hours to look-up the same information manually.